

120°30'W 120°20'W 120°10'W 120°W

48°20'N

48°10'N

48°N

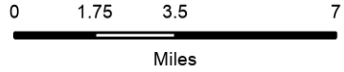
47°50'N



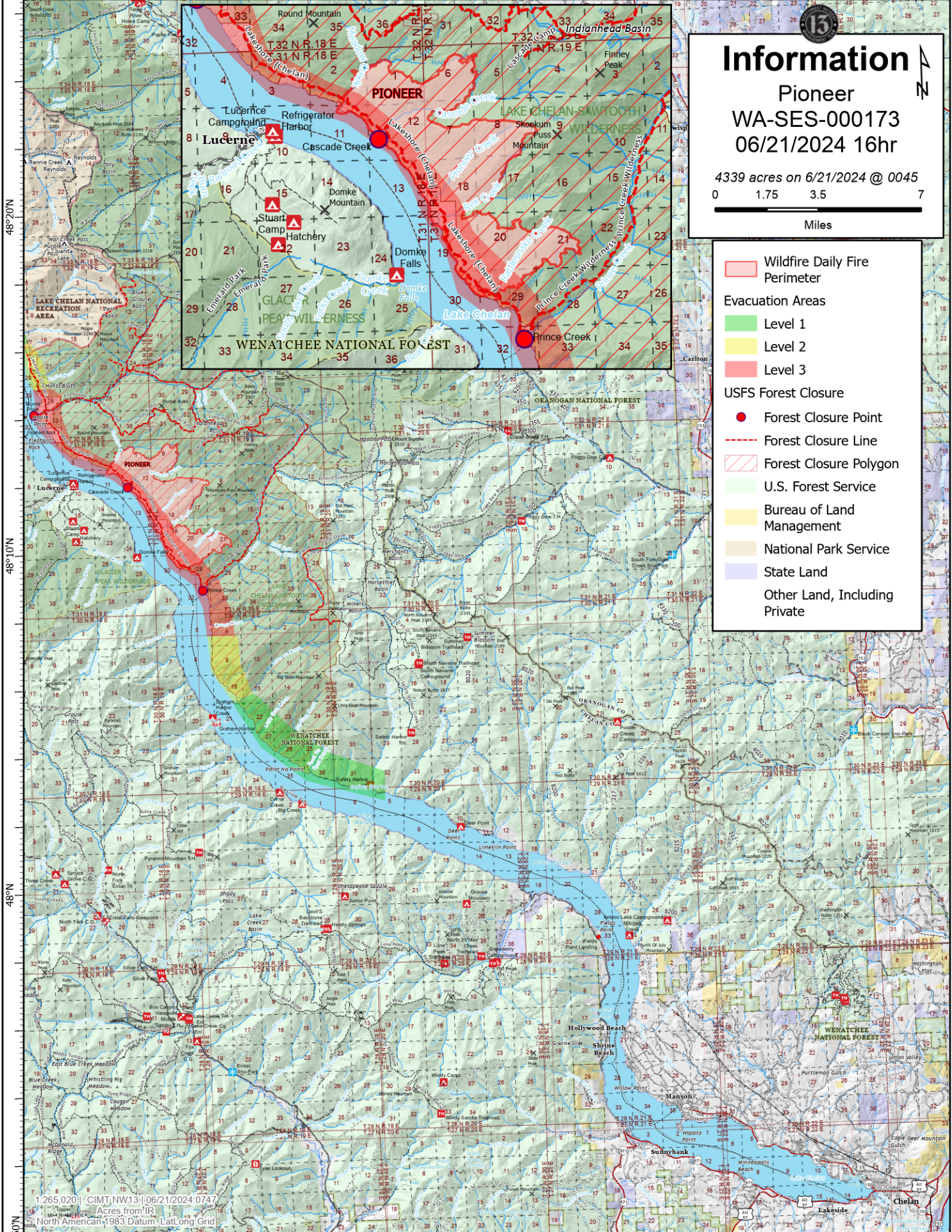
Information

Pioneer
WA-SES-000173
06/21/2024 16hr

4339 acres on 6/21/2024 @ 0045



- Wildfire Daily Fire Perimeter
- Evacuation Areas**
- Level 1
- Level 2
- Level 3
- USFS Forest Closure**
- Forest Closure Point
- Forest Closure Line
- Forest Closure Polygon
- U.S. Forest Service
- Bureau of Land Management
- National Park Service
- State Land
- Other Land, Including Private



1:265,020 | CIMT.NW.13 | 06/21/2024 0747
Acres from IIR
North American 1983 Datum, Lat/Long Grid